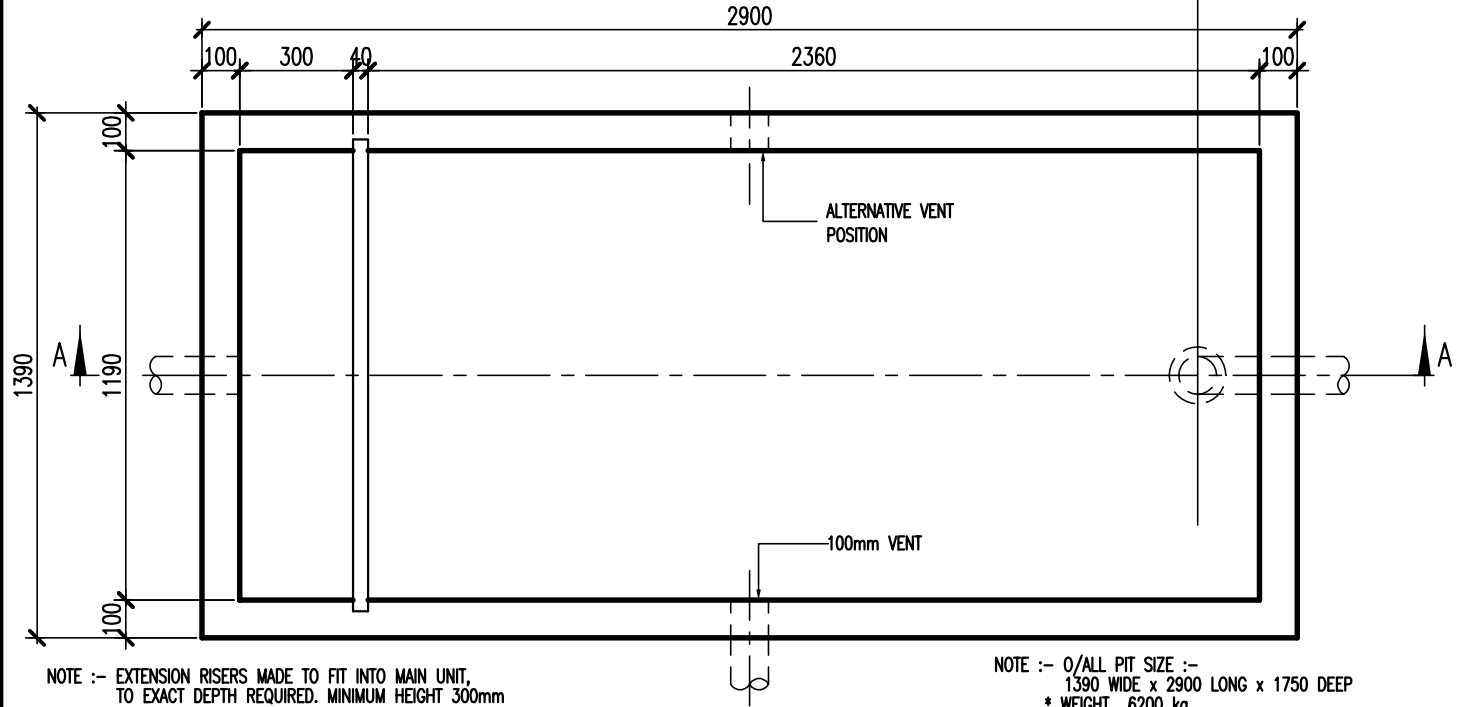
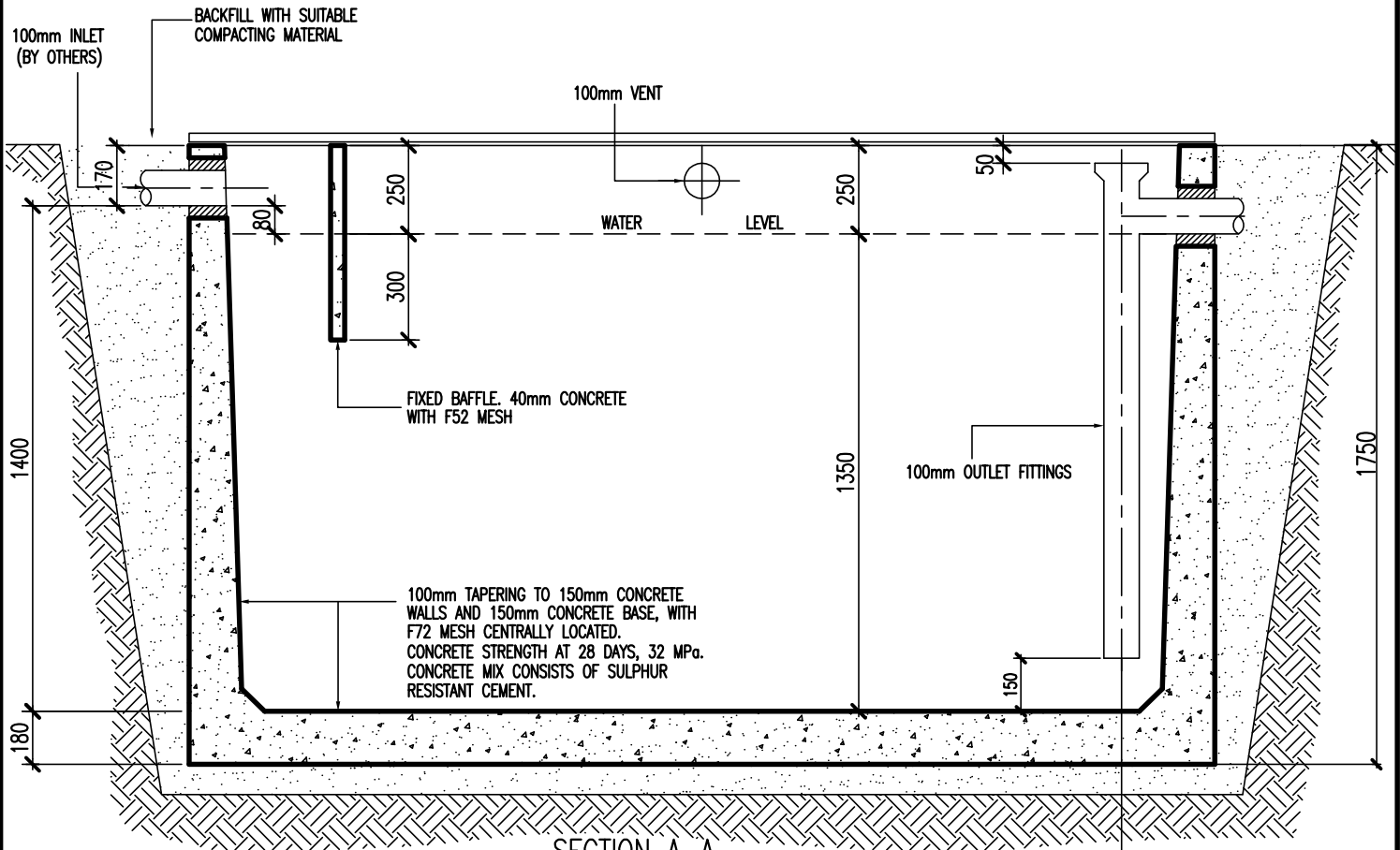


# 4500 litre Grease Interceptor Trap (G.I.T.)

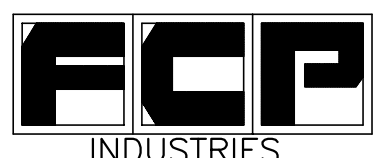


NOTE :- EXTENSION RISERS MADE TO FIT INTO MAIN UNIT, TO EXACT DEPTH REQUIRED. MINIMUM HEIGHT 300mm  
COVERS CONSIST OF :-  
\* 200mm THICK R.C. SLAB COVERING FULL LENGTH & WIDTH OF PIT WITH 2-No. ACCESS OPENINGS IN EITHER END

NOTE :- O/ALL PIT SIZE :-  
1390 WIDE x 2900 LONG x 1750 DEEP  
\* WEIGHT 6200 kg  
\* INTERCEPTOR TO BE INSTALLED, CONNECTED AND PROVIDED WITH COVERS IN ACCORDANCE WITH REQUIREMENTS OF LOCAL AUTHORITIES.  
\* ALL DIMENSIONS IN MILLIMETRES

MELBOURNE WATER TYPE 9/1A

APPROVAL No. 391/101/0020



**Frankston Concrete Products**

30-44 MILES GROVE  
P.O.Box 306  
SEAFORD, VICTORIA 3198

Tel.(03)9786 3111 Fax.(03)9786 3208  
web site - [www.frankstonconcrete.com.au](http://www.frankstonconcrete.com.au)  
email - [sales@frankstonconcrete.com.au](mailto:sales@frankstonconcrete.com.au)

DRAWN	M.D.S.
CHECKED	M.M.
APPROVED	C.Z.
DRAWING No.	95/1009