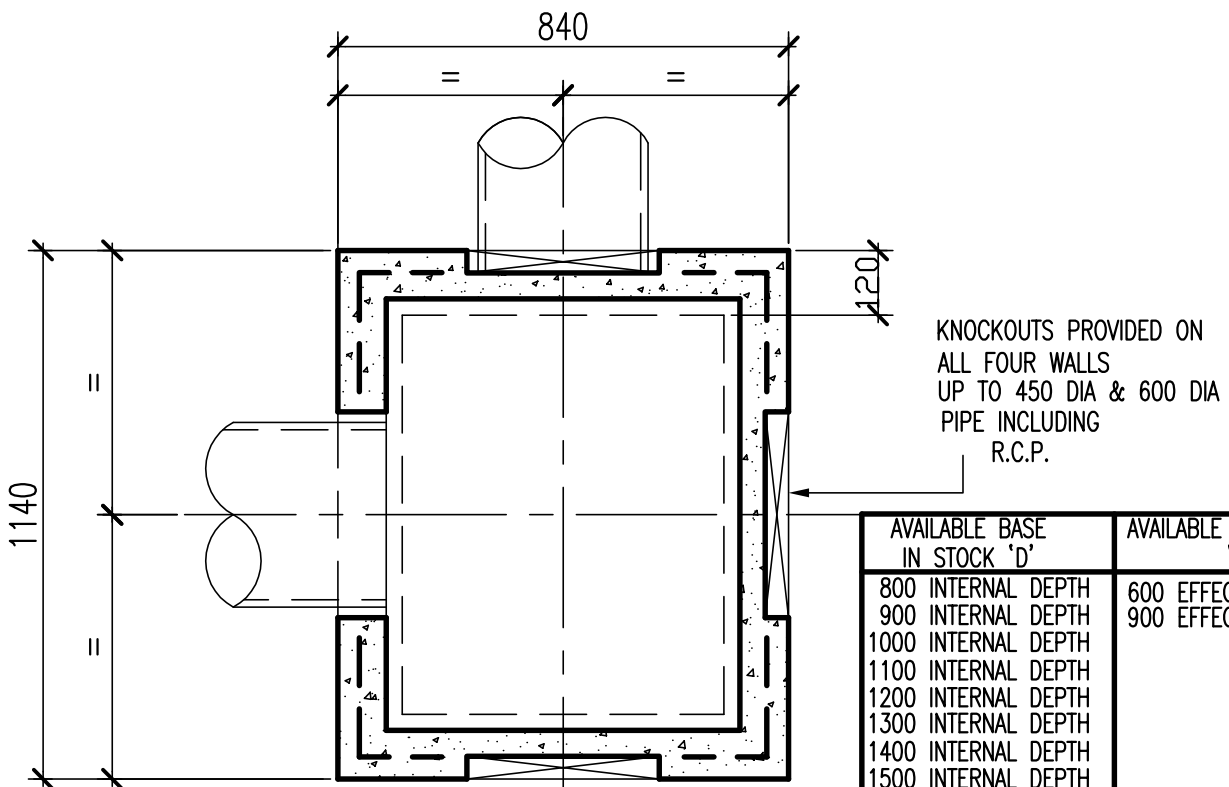
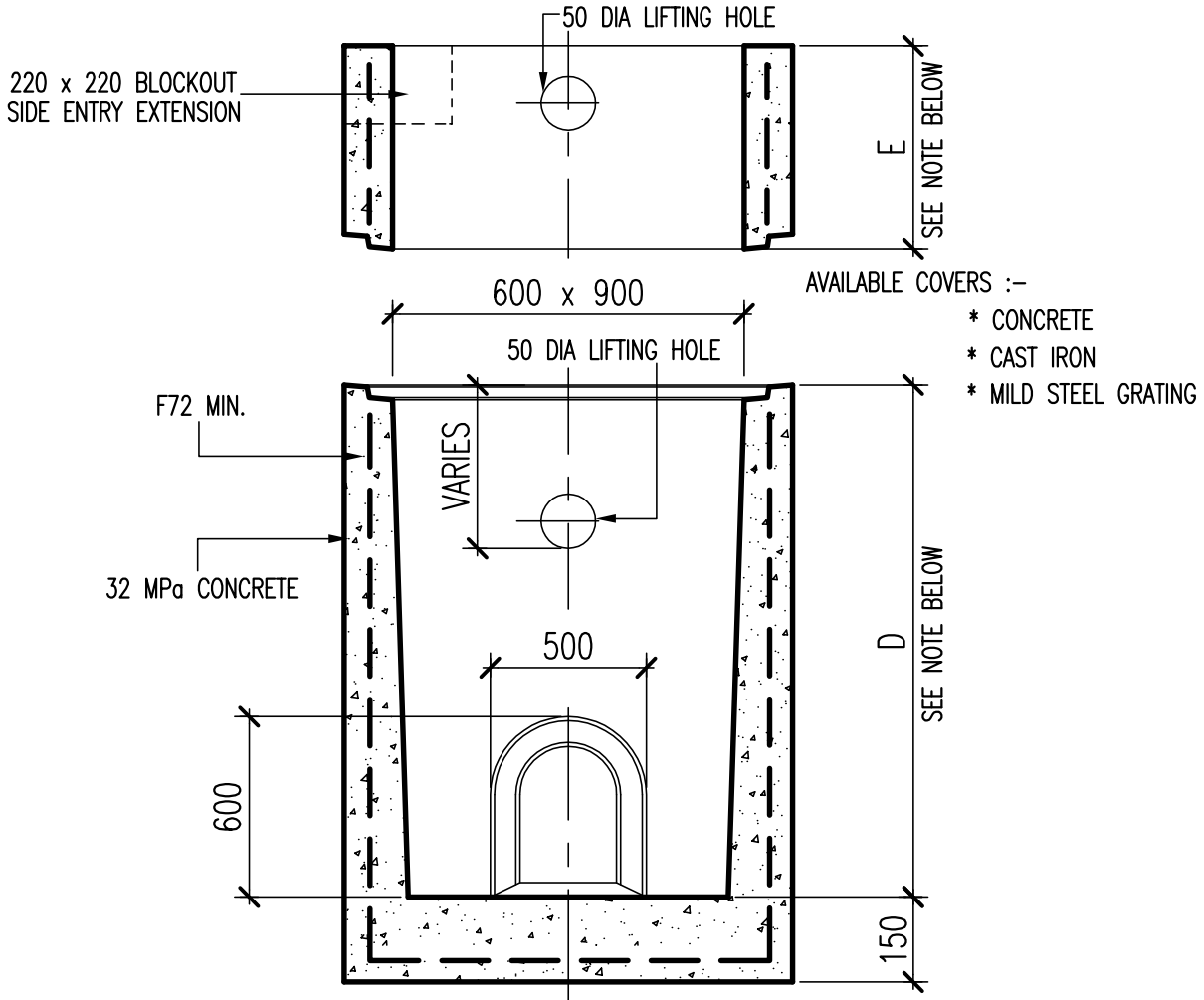
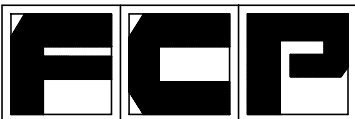


600 x 900 Standard S/Water Pit



AVAILABLE BASE IN STOCK 'D'	AVAILABLE EXTENSIONS 'E'
800 INTERNAL DEPTH	600 EFFECTIVE HEIGHT
900 INTERNAL DEPTH	900 EFFECTIVE HEIGHT
1000 INTERNAL DEPTH	
1100 INTERNAL DEPTH	
1200 INTERNAL DEPTH	
1300 INTERNAL DEPTH	
1400 INTERNAL DEPTH	
1500 INTERNAL DEPTH	



Frankston Concrete Products

30-44 MILES GROVE
P.O.Box 306
SEAFORD, VICTORIA 3198

Tel.(03)9786 3111 Fax.(03)9786 3208
web site - www.frankstonconcrete.com.au
email - sales@frankstonconcrete.com.au

DRAWN	M.D.S.
CHECKED	J.A.
APPROVED	M.M.
DRAWING No.	95/0026