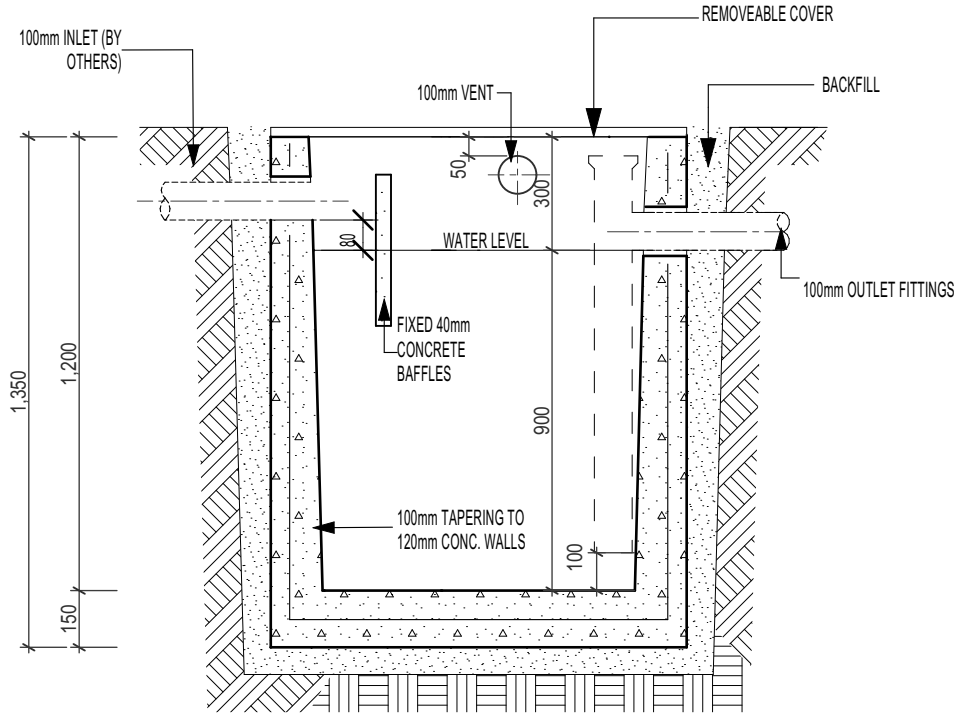
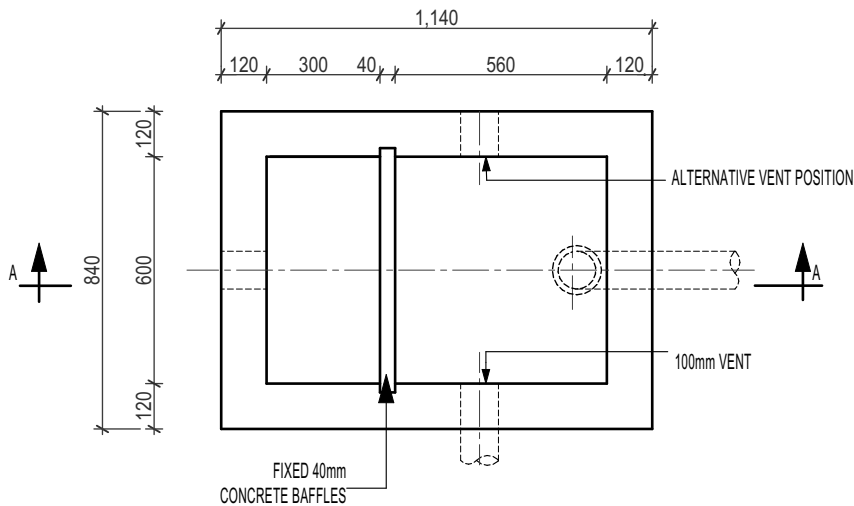


450 Litre GREASE INTERCEPTOR TRAP



SECTION A-A

CONCRETE 28 days 40mpa
 REINFORCEMENT F72
 LIFTERS 4 x 1.3t



PLAN

WEIGHT 1400KG

CAST IRON ACCESS
 COVERS TO SUIT:
 - LIGHT DUTY (55MM) OR
 - HEAVY DUTY (100MM)

EXTENSION RISERS MADE
 TO REQUIRED DEPTH. MIN.
 HEIGHT 300MM.

INTERCEPTOR TO BE
 INSTALLED, CONNECTED,
 VENTED & PROVIDED WITH
 COVERS IN ACCORDANCE
 WITH LOCAL AUTHORITY.



9 COLEMANS ROAD
 DANDENONG SOUTH VIC.
 3175

03 9786 3111
 sales@frankstonconcrete.com.au
 www.frankstonconcrete.com.au

SKU 450GIT

ALL DIMENSIONS IN MILLIMETRES (NOT TO SCALE) DRAWN: CZ
 ISSUE: MAY 2023