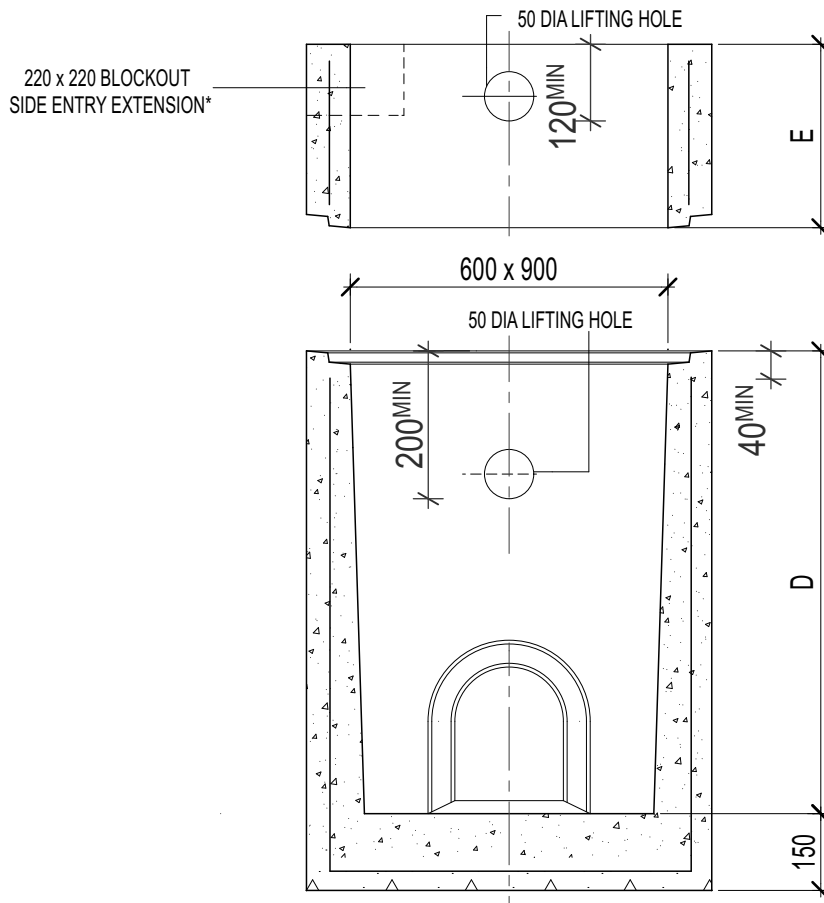


600 x 900 Stormwater Pit

MANUFACTURE METHOD WET CAST
 CONCRETE 40Mpa
 REINFORCEMENT F72
 LIFTERS 4 x1.3t



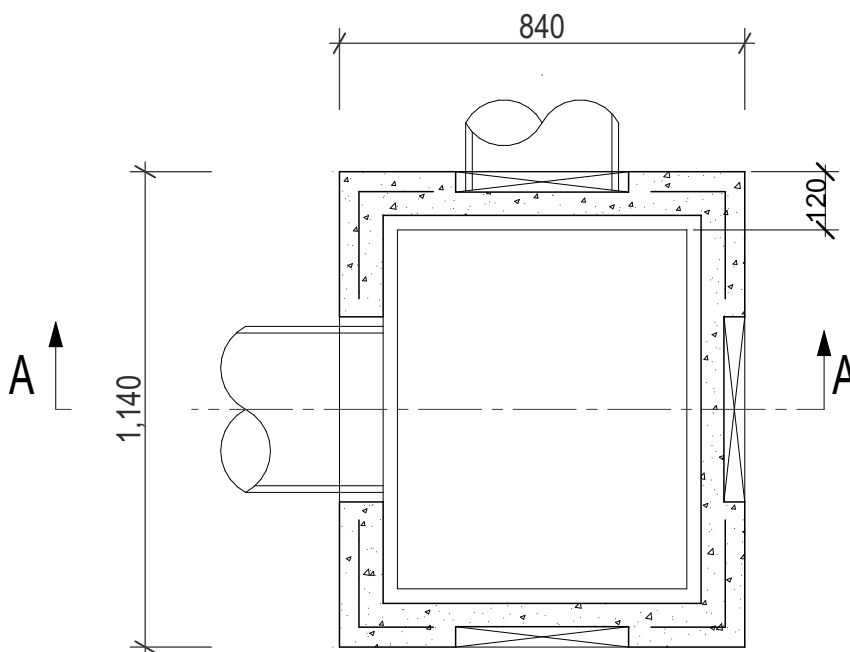
KNOCKOUTS
 PROVIDED ON ALL SIDES

AVAILABLE COVERS
 -CONCRETE
 -CAST IRON
 -MILD STEEL GRATING
 -HEEL SAFE GRATES
 -TERRA FIRMA

STEP IRON INSERTS TO
 AS1657-2018
 IN PIT & RISER DEPTHS
 >1000mm

*NOTE:
 SIDE ENTRY PIT RISER

SECTION A-A



PLAN

600X900 WET CAST PITS	
DEPTH (D)	WEIGHT (kg.)
400	600
500	700
600	810
700	910
800	1010
900	1100
1000	1200
1100	1300
1200	1400
1300	1500
1400	1600
1500	1700
600X900 EXTENSIONS	
HEIGHT (E)	WEIGHT (kg.)
300	295
475*	450
600	590
900	880
KNOCKOUTS	
PIT DEPTH	SIZE
<700mm	420mm
>800mm	600mm

VIC ROADS

This product as been independently tested in accordance with D.O.T Section 705.07 'Drainage Pits & Covers' & AS5100.5 Bridge Design



9 COLEMANS ROAD
 DANDENONG SOUTH VIC.
 3175

03 9786 3111
 sales@frankstonconcrete.com.au
 www.frankstonconcrete.com.au

SKU 69

ALL DIMENSIONS IN MILLIMETRES (NOT TO SCALE) DRAWN: CZ
 ISSUE: JUNE 2023