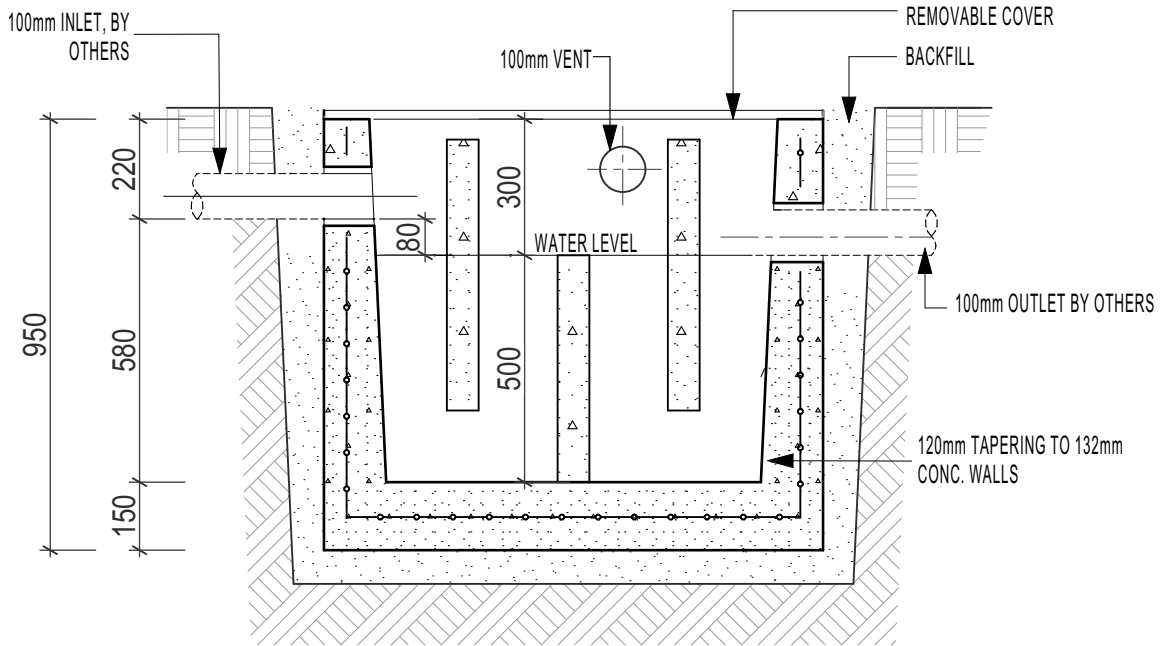
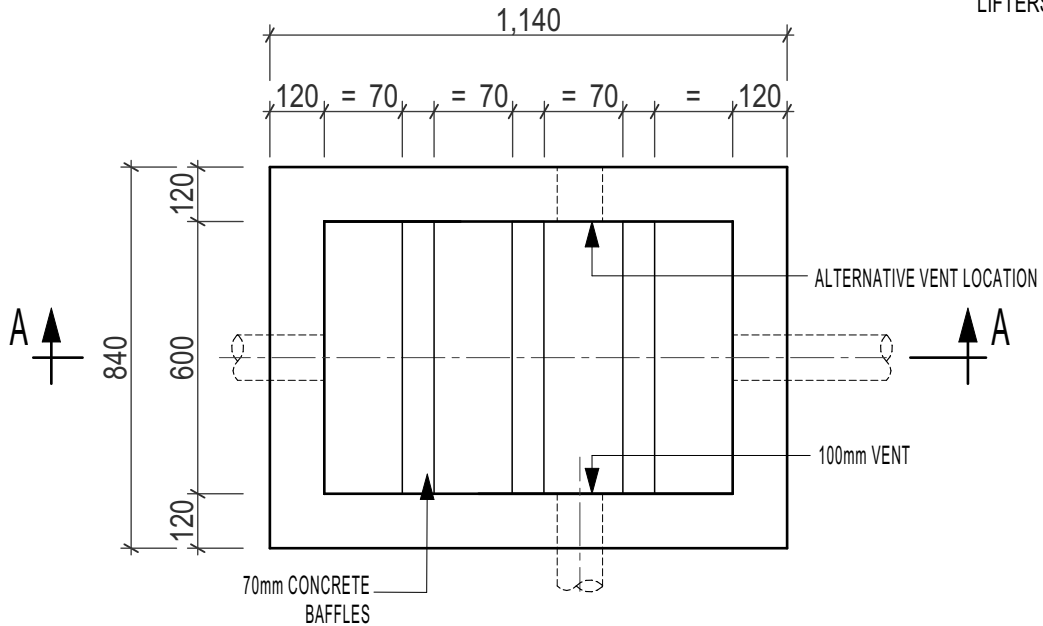


# 270 Litre NEAUTRALISING TANK



## SECTION A-A

CONCRETE 28 days 40mpa  
 Penetron Admix®  
 SB Alkaline Mix  
 REINFORCEMENT F72  
 LIFTERS 4 x 1.3 t



## PLAN

CAST IRON ACCESS  
 COVERS TO SUIT:  
 - LIGHT DUTY (55MM) OR  
 - HEAVY DUTY (100MM)

EXTENSION RISERS MADE  
 TO REQUIRED DEPTH. MIN.  
 HEIGHT 300MM.

WEIGHT 1563KG

13 X 20KG MARBLE CHIPS REQUIRED, SOLD SEPARATELY.

INTERCEPTOR TO BE  
 INSTALLED, CONNECTED,  
 VENTED & PROVIDED WITH  
 COVERS IN ACCORDANCE  
 WITH LOCAL AUTHORITY.