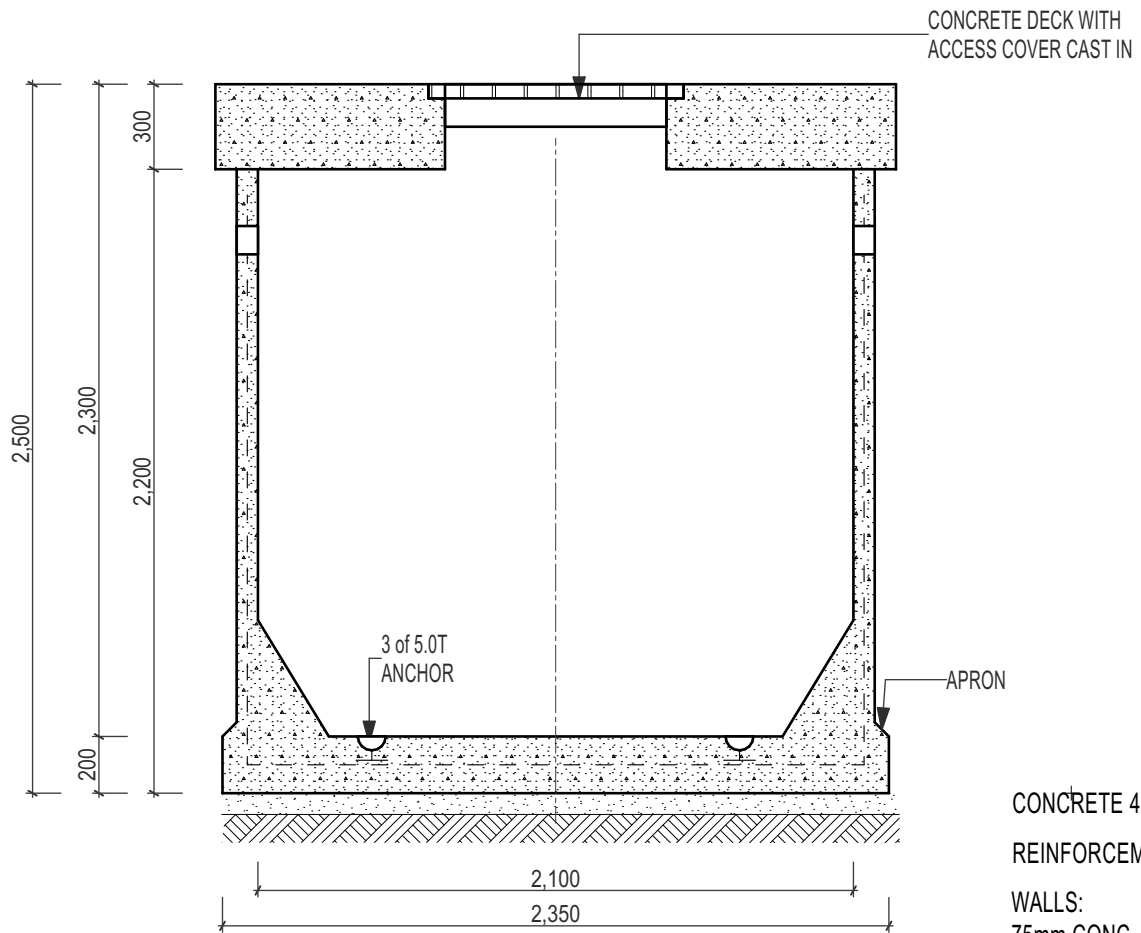
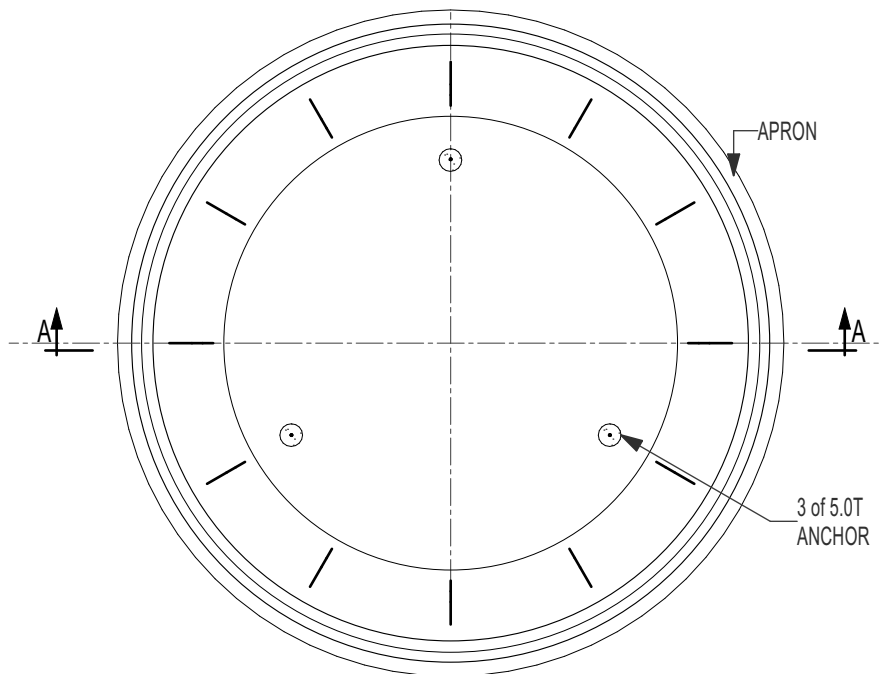


Pump Well Tank - 2100 dia x 2000 deep - 7000 Litres



SECTION A-A

CONCRETE 40MPa 28 days.
 REINFORCEMENT
 WALLS:
 75mm CONC. WITH F41
 MESH CENTRALLY LOCATED
 BASE: 160mm WITH 1x LAYER
 OF F41 MESH & 1x F72



PLAN

PITS TO BE INSTALLED,
 CONNECTED, VENTED &
 PROVIDED WITH COVERS
 IN ACCORDANCE WITH
 LOCAL AUTHORITY.

EXTENSIONS TO BE
 CONNECTED TO EXISTING
 UNIT WITH APPROVED
 MASTIC SEAL.

COVERS AVAILABLE IN
 SQUARE OR CIRCULAR
 SLAB CONFIGURATION.

COVER LOCATION & SIZE
 SPECIFIED MUST BE SUITABLE
 TO ACCOMMODATE PUMP
 REMOVAL

AVAILABLE WITH SEALED LID
 OR GRATE LIGHT, MEDIUM or
 HEAVY DUTY

WEIGHT(approx.) BASE 6000 kgs - LID - 3300kg



9 COLEMANS ROAD
 DANDENONG SOUTH VIC.
 3175

03 9786 3111
 sales@frankstonconcrete.com.au
 www.frankstonconcrete.com.au

SKU PW2100

ALL DIMENSIONS IN MILLIMETRES (NOT TO SCALE) DRAWN: CZ
 ISSUE: MAY 2023