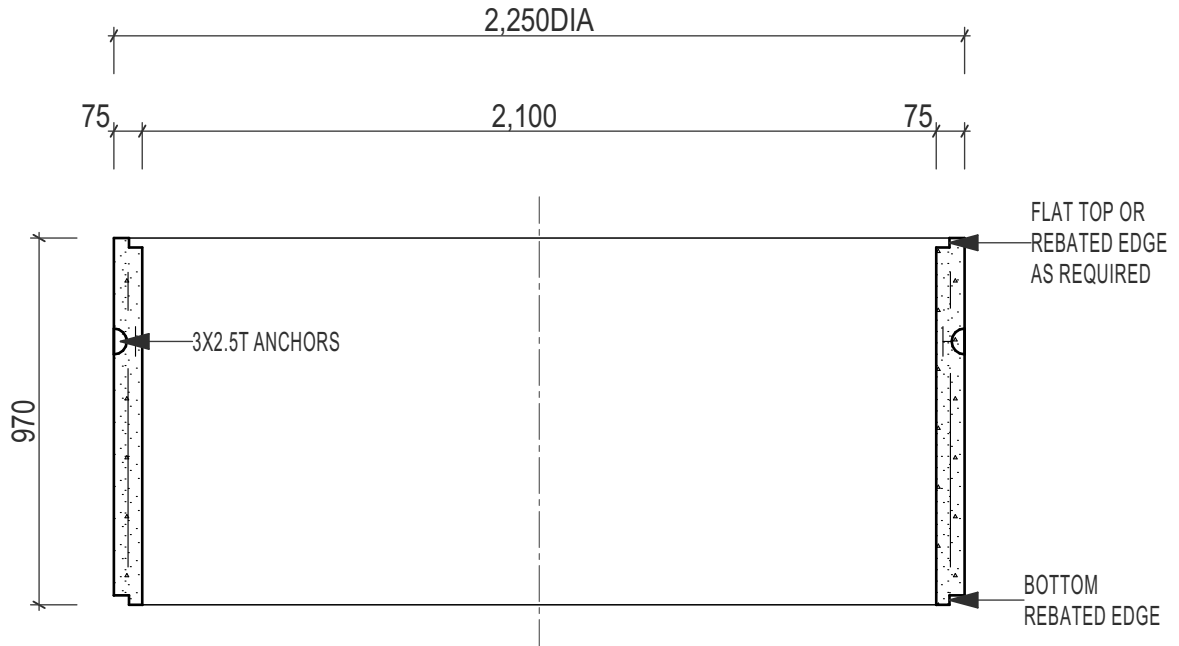
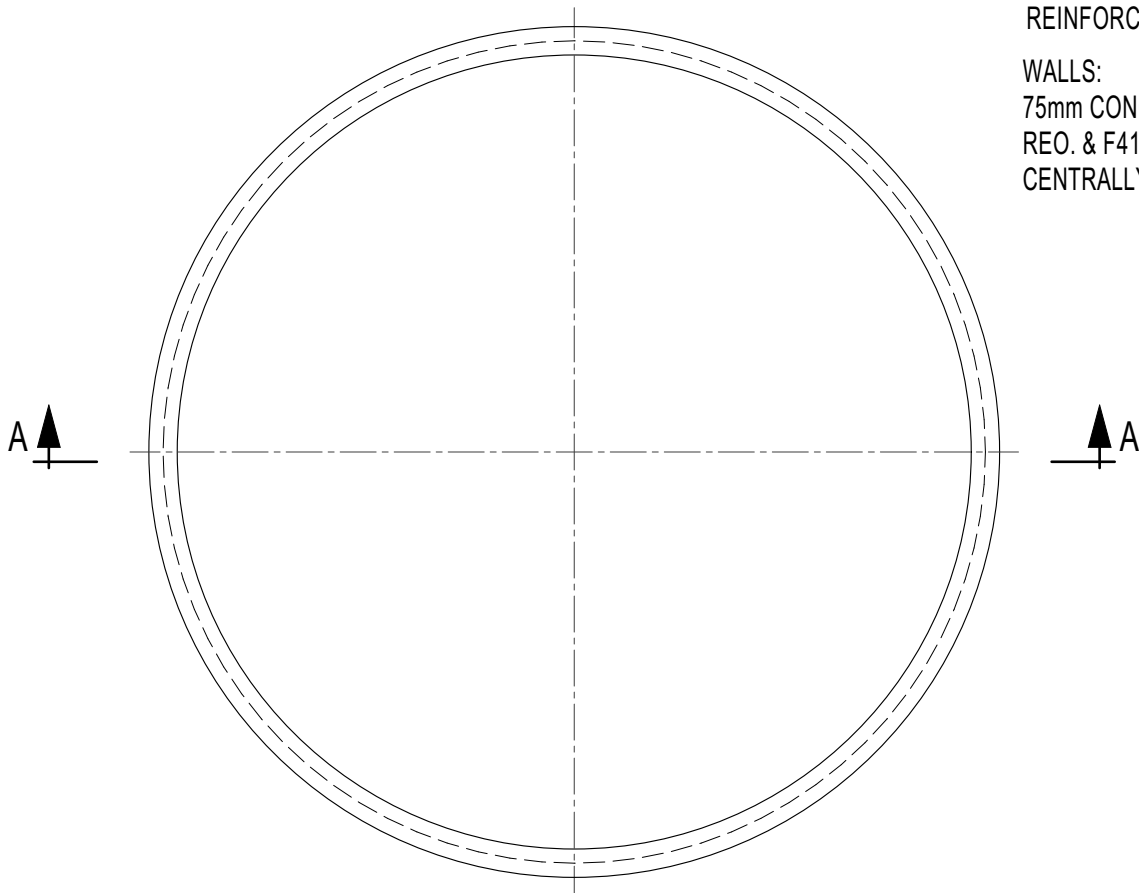


2100 dia x 970 Extension - 3350 Litres



SECTION A-A



CONCRETE 40MPa 28 days.

REINFORCEMENT

WALLS:

75mm CONC. WITH N12
REO. & F41 MESH
CENTRALLY LOCATED

PLAN

MASS - 1500 Kgs (approx)



9 COLEMANS ROAD
DANDENONG SOUTH VIC.
3175

03 9786 3111
sales@frankstonconcrete.com.au
www.frankstonconcrete.com.au

SKU PW2100EXT

ALL DIMENSIONS IN MILLIMETRES (NOT TO SCALE) DRAWN: CZ
ISSUE: MAY 2023