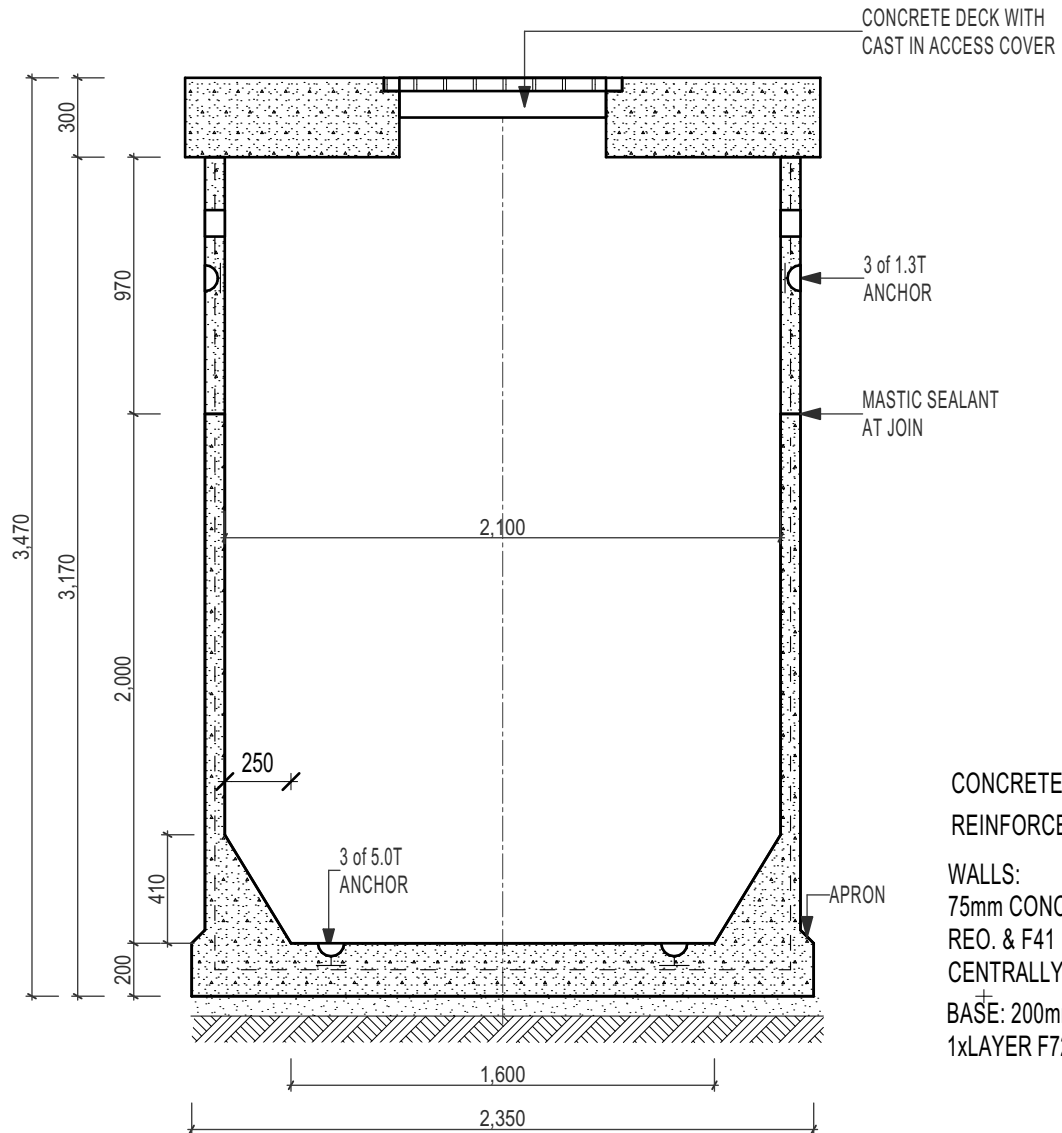


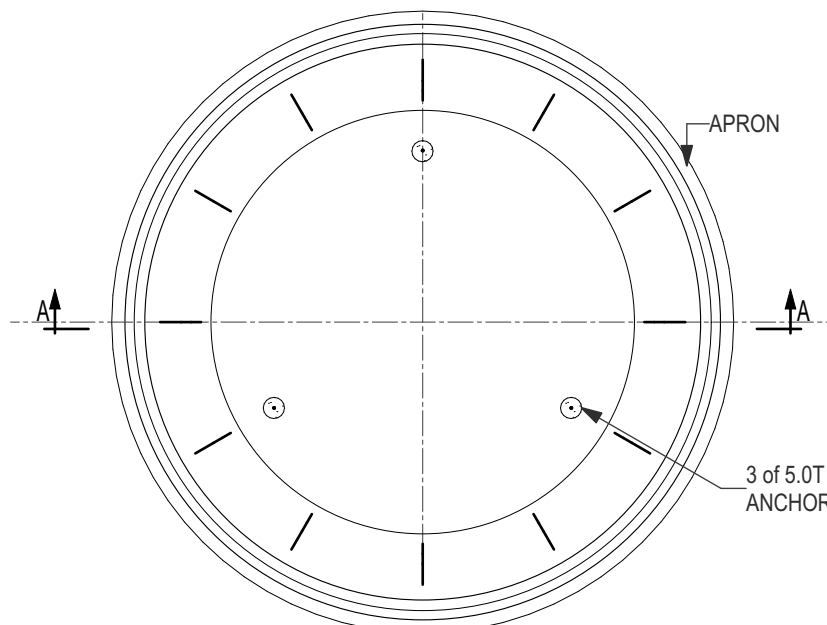
Resiwell Water Tank - 2100 dia x 2970 deep - 10000 Litres



CONCRETE 40MPa 28 days.
REINFORCEMENT

WALLS:
75mm CONC. WITH N12
REO. & F41 MESH
CENTRALLY LOCATED
BASE: 200mm WITH
1xLAYER F72

SECTION A-A



PITS TO BE INSTALLED,
CONNECTED, VENTED &
PROVIDED WITH COVERS
IN ACCORDANCE WITH
LOCAL AUTHORITY.

EXTENSIONS TO BE
CONNECTED TO EXISTING
UNIT WITH APPROVED
MASTIC SEAL.

COVERS AVAILABLE IN
SQUARE OR CIRCULAR
SLAB CONFIGURATION.

COVER LOCATION & SIZE
SPECIFIED MUST BE SUITABLE
TO ACCOMODATE PUMP
REMOVAL

AVAILABLE WITH SEALED LID
OR GRATE LIGHT, MEDIUM or
HEAVY DUTY

PLAN

WEIGHTS (approx.) - BASE 6000 kgs - EXTENSION 1500kgs - LID 3300kg



9 COLEMANS ROAD
DANDENONG SOUTH VIC.
3175

03 9786 3111
sales@frankstonconcrete.com.au
www.frankstonconcrete.com.au

SKU RW10000

ALL DIMENSIONS IN MILLIMETRES
(NOT TO SCALE) DRAWN: CZ
ISSUE: MAY 2023