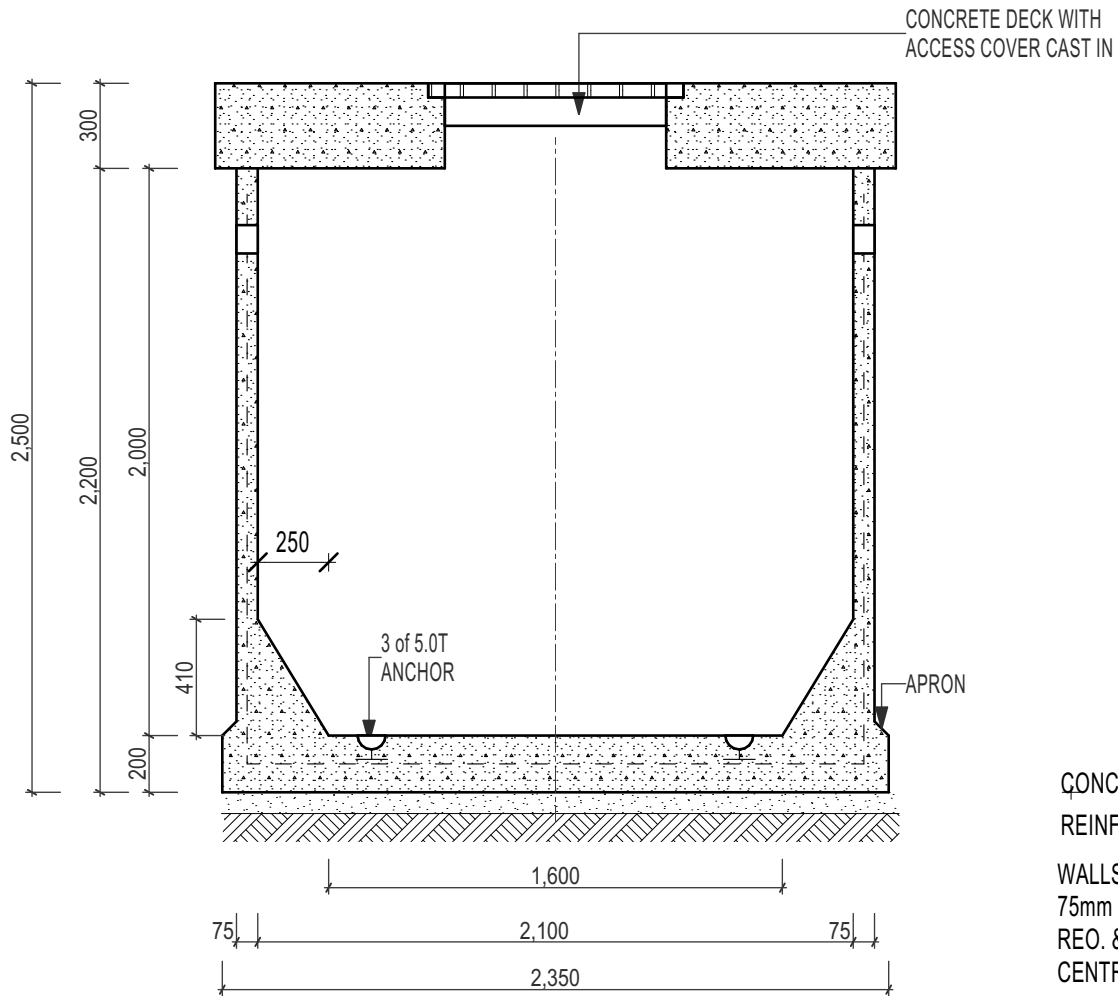


# Resiwell Water Tank - 2100 dia x 2000 deep - 7000 Litres

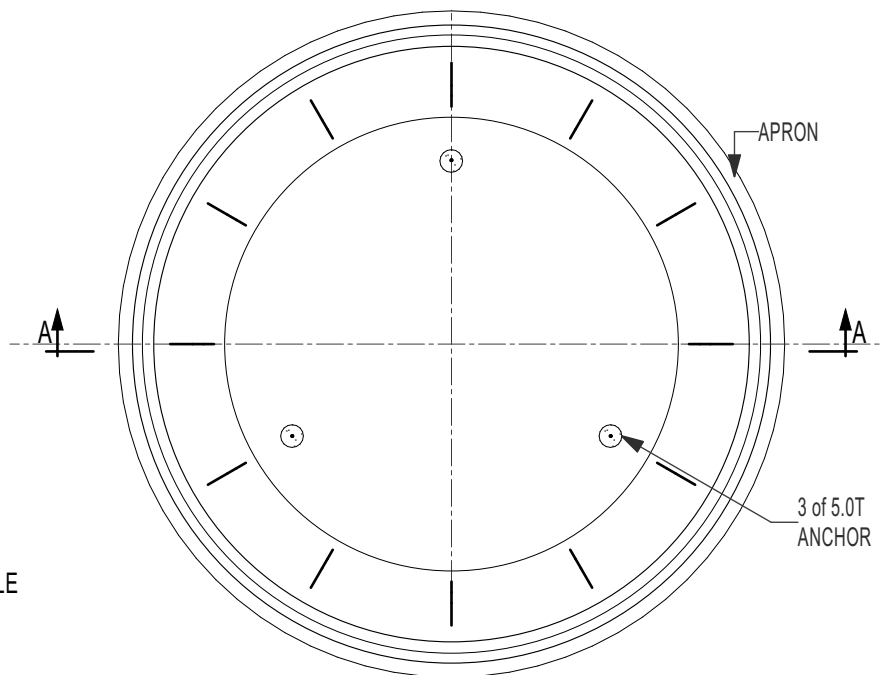


**SECTION A-A**

CONCRETE 40MPa 28 days  
REINFORCEMENT

WALLS:  
75mm CONC. WITH N12  
REO. & F41 MESH  
CENTRALLY LOCATED

BASE: 200mm WITH  
1xLAYER F72



**PLAN**

WEIGHT(approx.) BASE 6000 kgs - LID - 3300kg

PITS TO BE INSTALLED,  
CONNECTED, VENTED &  
PROVIDED WITH COVERS  
IN ACCORDANCE WITH  
LOCAL AUTHORITY.

EXTENSIONS TO BE  
CONNECTED TO EXISTING  
UNIT WITH APPROVED  
MASTIC SEAL.

COVERS AVAILABLE IN  
SQUARE OR CIRCULAR  
SLAB CONFIGURATION.

COVER LOCATION & SIZE  
SPECIFIED MUST BE SUITABLE  
TO ACCOMODATE PUMP  
REMOVAL

AVAILABLE WITH SEALED LID  
OR GRATE LIGHT, MEDIUM or  
HEAVY DUTY



9 COLEMANS ROAD  
DANDENONG SOUTH VIC.  
3175

03 9786 3111  
sales@frankstonconcrete.com.au  
www.frankstonconcrete.com.au

SKU RW7000

ALL DIMENSIONS IN MILLIMETRES (NOT TO SCALE) DRAWN: CZ  
ISSUE: 7/31/2023