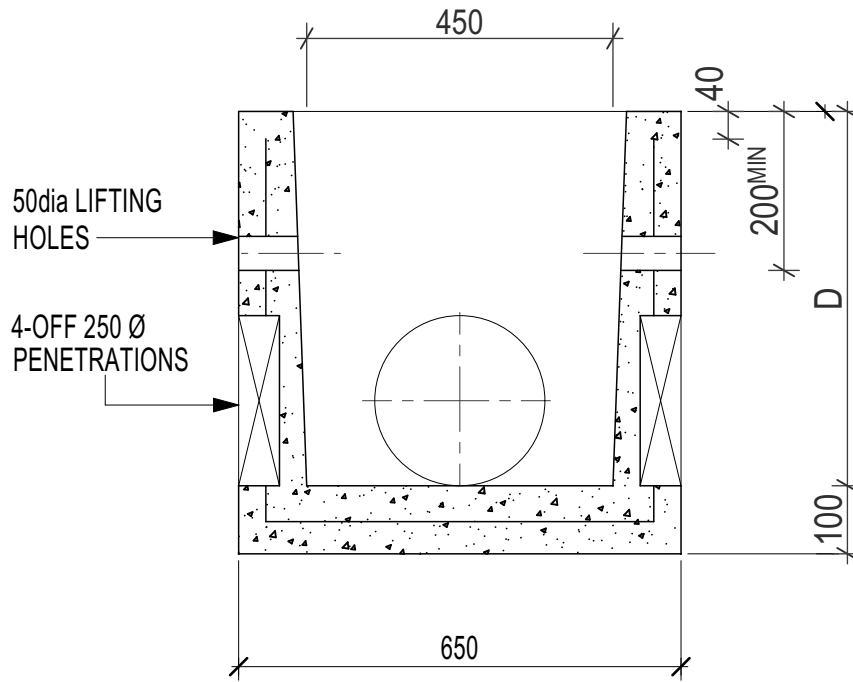


450 x 450 Stormwater Pit

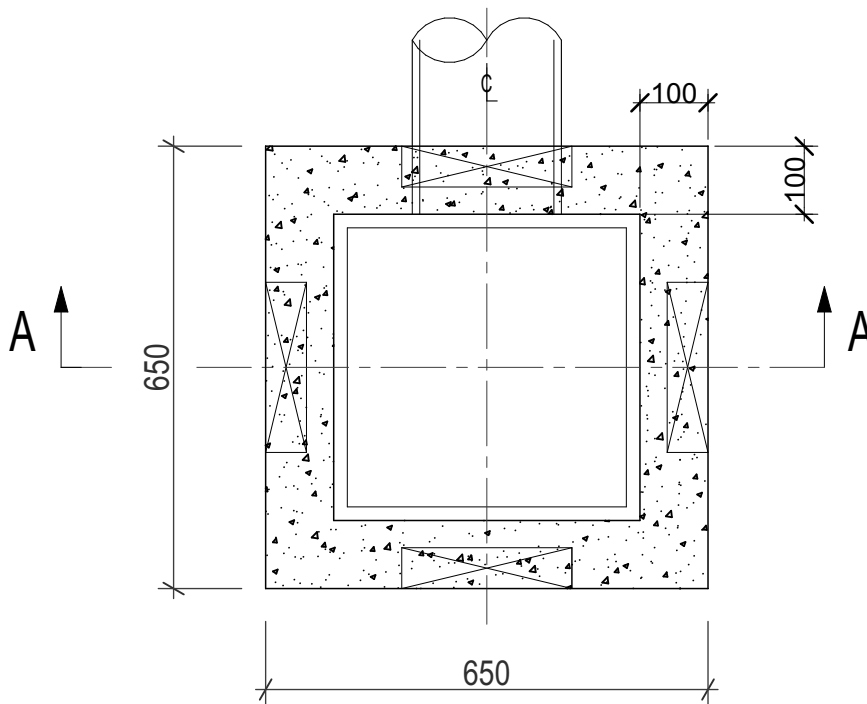


SECTION A-A

MANUFACTURE METHOD	WET CAST
CONCRETE	40Mpa
REINFORCEMENT	F72
LIFTERS	3 x 1.3t

KNOCKOUTS
PROVIDED ON ALL SIDES

AVAILABLE COVERS
 -CONCRETE
 -CAST IRON
 -MILD STEEL GRATING
 -HEEL SAFE GRATES
 -TERRA FIRMA



PLAN

450x450 WET CAST PITS	
DEPTH(D)	WEIGHT (kg.)
450	330
550	410
600	440
700	500
800	560
900	615
450x450 EXTENSIONS	
HEIGHT (E)	WEIGHT (kg.)
100	55